



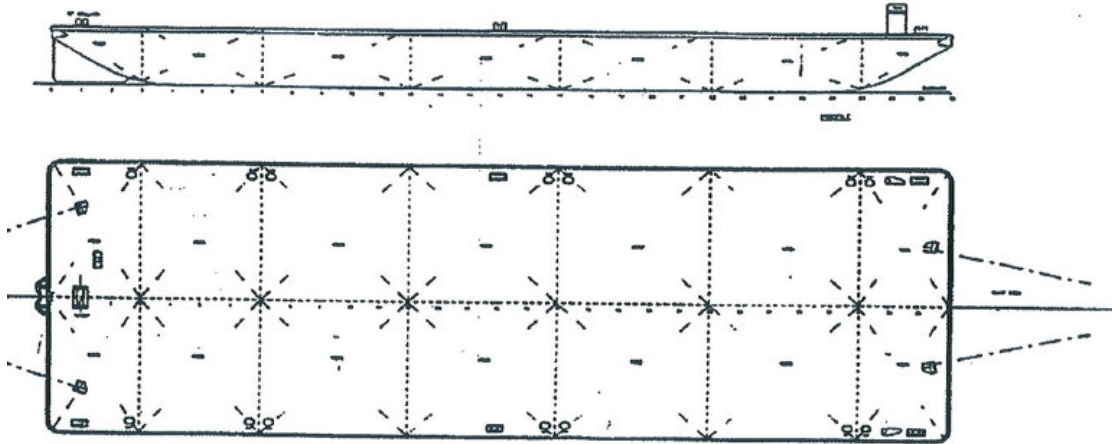
# WINSTAR SHIPPING PTE LTD

Co. Reg. No. 199304527N GST Reg. No. M2-0116260-2

39B NEIL ROAD SINGAPORE 088823

TEL: 6220 0495 FAX: 6271 0922

Webpage: www.winstar.com.sg



## Winstar III

### GENERAL

Name of Vessel : Winstar III  
Type : Steel Barge  
Year Built : 1997, Indonesia  
Classification : ABS  
Port of Registry : Singapore

### PRINCIPAL DIMENSION

Length Overall : 180.00ft (54.86m)  
Breadth : 56.00ft (17.07m)  
Depth : 12.00ft (3.66m)  
Draft Moulded : 3.66m  
Free Board :  
Deadweight : 2100 Tons  
GRT / NRT : 853 / 255  
Deck Strength : 5 Tons per M2  
Bulkhead : 1 Longitudinal / 6 Transverse  
Tank :  
Scanting : Main Deck mm  
: Side Shell mm  
: Bottom mm

### DECK EQUIPMENT

### OTHERS

6ft High Sideboard  
Ramp Door SWL 40 Tons (7.315m x 4.00m)

**PARTICULARS GIVEN HEREIN ARE ENTIRELY WITHOUT WARRANTY AS TO CORRECTNESS  
INTERESTED PARTIES MUST SATISFY THEMSELVES BY INSPECTION OR OTHER MEANS**